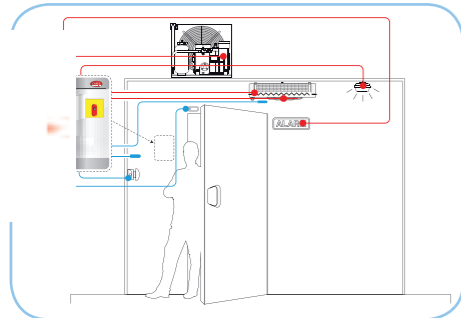


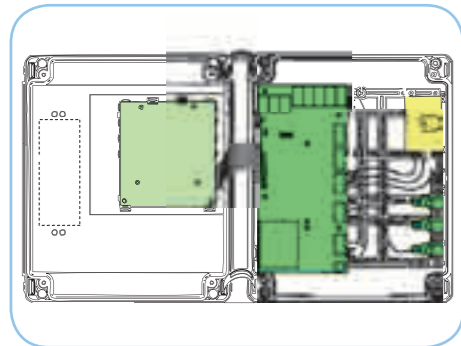
High Efficiency Solutions.



# MasterCella



cold room



mounting board

MasterCella offers an integrated and complete solution for single-phase, static or ventilated cold rooms. It directly manages single-phase units with up to 2 Hp compressor relay.

The product was developed to give a complete solution to the installers: a big box with space available to plug electro-magnetic components and comfortable wiring, and a powerful electric board.

MasterCella manages smart defrosts, consequently ensuring energy savings in the system as a whole. In models fitted with a real time clock, HACCP management is standard. This guarantees control over the temperature of stored foods in compliance with the requirements of the HACCP system

## features

- Models with safety door interlock already fixed in the box
- IP65 rated panel for demanding environments
- Real time clock to record alarm times on certain models
- Serial connector for programming key and network aiding quick installation and maintenance

## benefits

- Simple and easy to read user interface
- Panel or wall mounting
- New design allows more space for wiring inside the main housing
- HACCP compliance allows better control of food safety
- Offers great flexibility to manage end defrost completely and independently

## Available models

Models	compressor	defrost	evaporator fans	aux1	light/aux2	room temperature	defrost temperature	digital input/probe 3	digital input/probe 4	digital input/probe 5	HACCP	programming key	high efficiency display	buzzer	infrared	real time clock	optional "hot point" display terminal	optional RS485 board
--------	------------	---------	-----------------	------	------------	------------------	---------------------	-----------------------	-----------------------	-----------------------	-------	-----------------	-------------------------	--------	----------	-----------------	---------------------------------------	----------------------

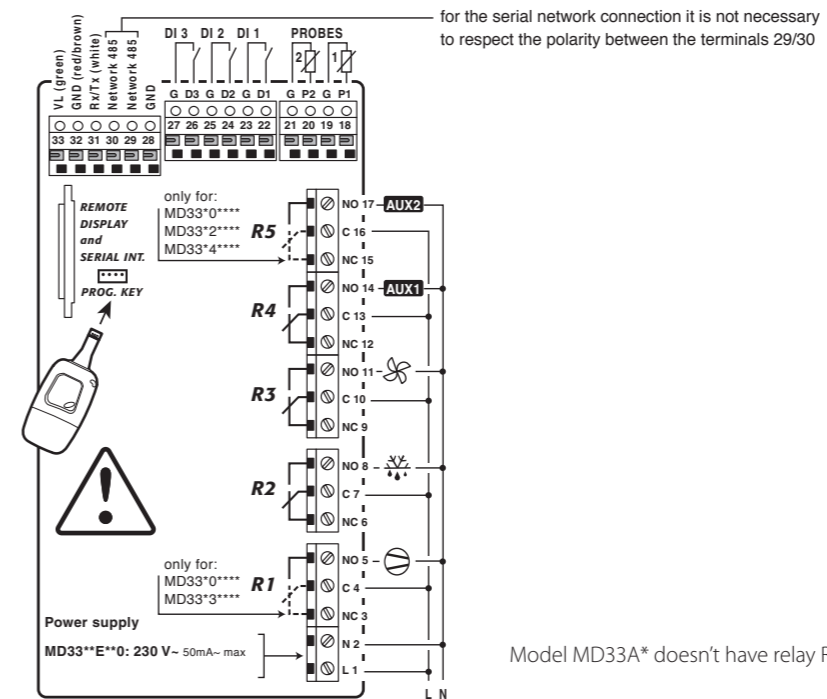
### normal

MD33A0EN00	16 A	-	-	8 A	•	•	•	•	•	•	-	•	•	•	-	-	•	•
MD33A2ER00	30 A	-	-	8 A	16 A	•	•	•	•	•	-	•	•	•	•	-	•	•
MD33A5ER00	30 A	-	-	8 A	2 Hp	•	•	•	•	•	-	•	•	•	•	-	•	•
MD33D0EN00	16 A	16 A	8 A	8 A	16 A	•	•	•	•	•	-	•	•	•	-	-	•	•
MD33D2EN00	16 A	16 A	8 A	8 A	16 A	•	•	•	•	•	•	•	•	•	•	•	•	•
MD33D2EN00	30 A	16 A	8 A	8 A	16 A	•	•	•	•	•	-	•	•	•	-	-	•	•
MD33D5EN00	30A	16 A	8 A	8 A	2 Hp	•	•	•	•	•	-	•	•	•	-	-	•	•
MD33D5EB00	30 A	16 A	8 A	8 A	2 Hp	•	•	•	•	•	•	•	•	•	•	•	•	•

### with safety door interlock

MD33D0FB00	16 A	16 A	8 A	8 A	16 A	•	•	•	•	•	•	•	•	•	•	•	•	•
MD33D5FB00	30 A	16 A	8 A	8 A	2 Hp	•	•	•	•	•	•	•	•	•	•	•	•	•

## Wiring diagram



Model MD33A\* doesn't have relay R2 and R3

### Headquarters ITALY

CAREL INDUSTRIES Hqs.  
Via dell'Industria, 11  
35020 Brugine - Padova (Italy)  
Tel. (+39) 0499 716611  
Fax (+39) 0499 716600  
carel@carel.com

### Sales organization

CAREL Asia - www.carel.com  
CAREL Australia - www.carel.com.au  
CAREL China - www.carel-china.com  
CAREL Deutschland - www.carel.de  
CAREL France - www.carelfrence.fr  
CAREL Iberica - www.carel.es  
CAREL India - www.carel.in

CAREL HVAC/R Korea - www.carel.com  
CAREL Russia - www.carelrussia.com  
CAREL South Africa - www.carelcontrols.co.za  
CAREL Sud America - www.carel.com.br  
CAREL U.K. - www.careluk.co.uk  
CAREL U.S.A. - www.carelusa.com

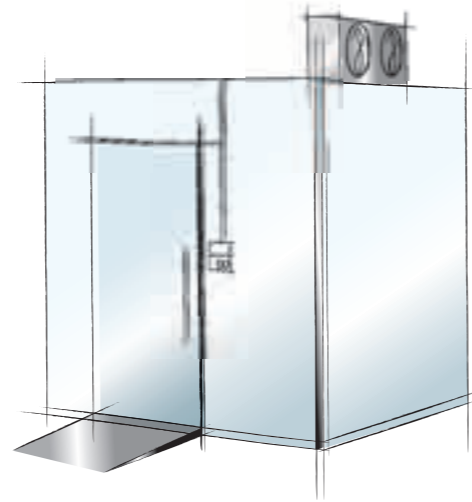
### Affiliates

CAREL Korea (for retail market) - www.carel.co.kr  
CAREL Ireland - www.carel.com  
CAREL Czech & Slovakia - www.carel-cz.cz  
CAREL Thailand - www.carel.co.th  
CAREL Turkey - www.carel.com.tr



## typical environments

- cold rooms and freezer rooms;
- seasoning rooms;
- small refrigerated warehouses.

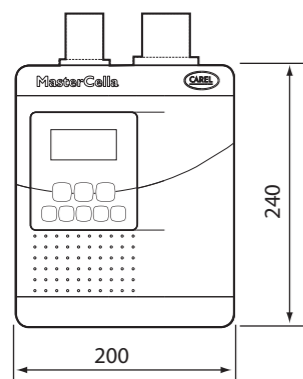


## typical installation questions

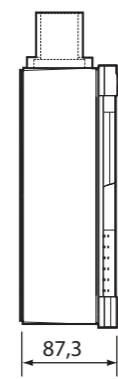
- power supply? 230 Vac
- probe type? up to 5 NTC/PTC\*
- Digital input? up to 3 voltage free configurables\*
- Number of outputs? 3 or 5 relays
- Rating compressor relay? compressor 30A\*
- type of connection? panel or wall mounting
- Storage conditions? -20T70°C, <90% RH
- alarm? high & low temperature alarm, external, probe failure, open door, antifreeze, HACCP

\* see specific code for characteristics and features

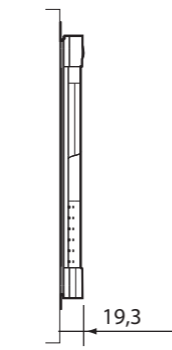
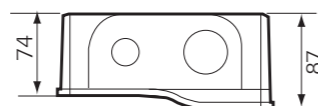
### Dimensions (mm)



### Mounting



wall mounting



panel mounting

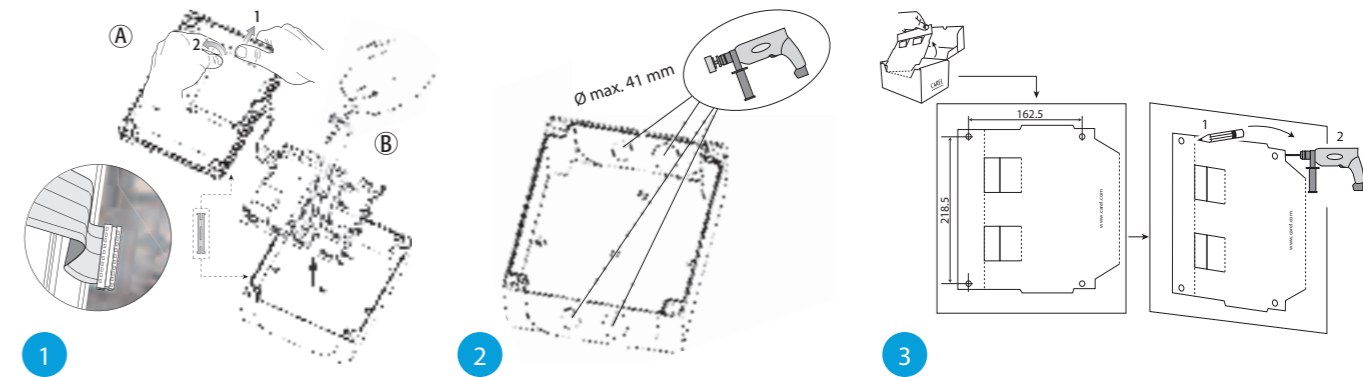


## cross reference



competitor models					CAREL models	
dixell	eliwell	pego	danfoss	ako	CAREL equivalent codes	characteristics of CAREL code
<b>Normal temperature cold rooms</b>						
XLR130	EWRC300 LX EWRC500 LX	ECP200 EXPERT	AK-RC 101	CAMCtrl-3 AKO-15613	<b>MD33A0EN00</b>	230 Vac, compr. relay 16 A, AUX1 relay 8 A, AUX2 relay 16 A, 2 NTC, 3 DI
					<b>MD33A2ER00</b>	230 Vac, compr. relay 30 A, AUX1 relay 8 A, AUX2 relay 16 A, 2 NTC, 3 DI, IR
					<b>MD33A5ER00</b>	230 Vac, compr. relay 30 A, AUX1 relay 8 A, AUX2 relay 2 Hp, 2 NTC, 3 DI, IR
<b>Low temperature cold rooms</b>						
XLR170	EWRC300 LX EWRC500 LX EWRC550 LX	ECP200 EXPERT	AK-RC 101	CAMCtrl-6 AKO-15633	<b>MD33D0EB00</b>	230 Vac, compr. relay 16 A, defrost relay 16 A, fan relay 8 A, AUX1 relay 8 A, AUX2 relay 16 A, 2 NTC, 3 DI, IR, RTC
					<b>MD33D0EN00</b>	230 Vac, compr. relay 16 A, defrost relay 16 A, fan relay 8 A, AUX1 relay 8 A, AUX2 relay 16 A, 2 NTC, 3 DI
					<b>MD33D0FB00</b>	230 Vac, compr. relay 16 A, defrost relay 16 A, fan relay 8 A, AUX1 relay 8 A, AUX2 relay 16 A, 2 NTC, 3 DI, IR, RTC, safety door interlock
					<b>MD33D2EN00</b>	230 Vac, compr. relay 30 A, defrost relay 16 A, fan relay 8 A, AUX1 relay 8 A, AUX2 relay 16 A, 2 NTC, 3 DI
					<b>MD33D5EB00</b>	230 Vac, compr. relay 30 A, defrost relay 16 A, fan relay 8 A, AUX1 relay 8 A, AUX2 relay 2 Hp, 2 NTC, 3 DI, IR, RTC
					<b>MD33D5EN00</b>	230 Vac, compr. relay 30 A, defrost relay 16 A, fan relay 8 A, AUX1 relay 8 A, AUX2 relay 2 Hp, 2 NTC, 3 DI
					<b>MD33D5FB00</b>	230 Vac, compr. relay 30 A, defrost relay 16 A, fan relay 8 A, AUX1 relay 8 A, AUX2 relay 2 Hp, 2 NTC, 3 DI, IR, RTC, safety door interlock

### Wall mounting



### Panel mounting

